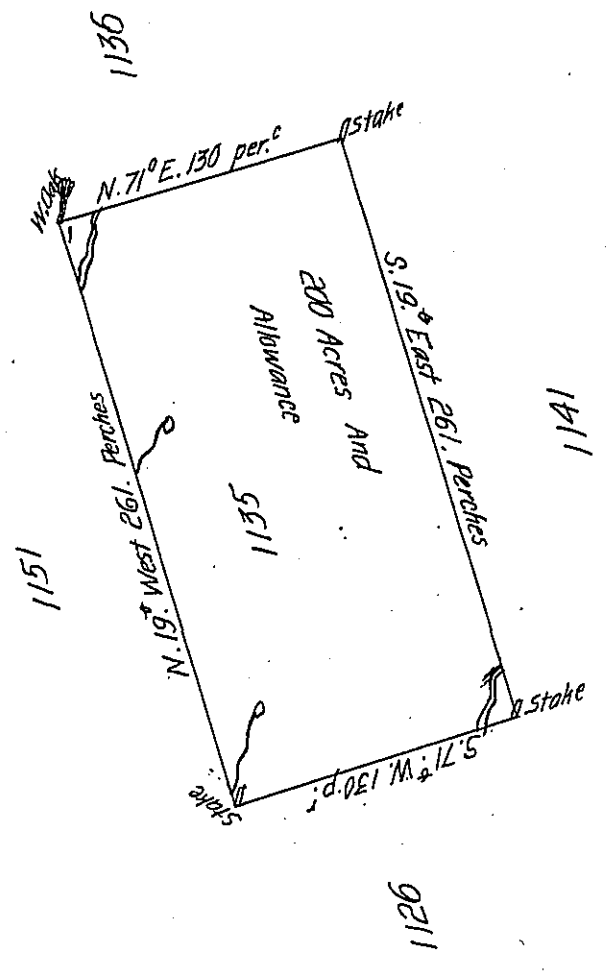


Lot N<sup>o</sup> MCXXXV.



In pursuance of an act of General Assembly of the State of Pennsylvania, passed the 24<sup>th</sup> Day of February 1785 intitled, 'an Act for directing the Mode of distributing the Donation Lands promised to the Troops by this common Wealth', and by order of the surveyor General With the approbation of the honorable the executive council, I have surveyed on the fifth Day of November 1785, the above described Tract of Two hundred Acres of land, and allowance of six Pr Ct for Roads &c. N<sup>o</sup> 1135. situate in district N<sup>o</sup> 6 on the West of the Allegheny River, in the County of Westmoreland.

To John Lukens Esq.  
Surveyor General.

Ja: Chrystie, Deputy Surveyor

IN TESTIMONY that the above is a copy of the original remaining on file in the Department of Internal Affairs of Pennsylvania, made conformably to an Act of Assembly approved the 16th day of February, 1833, I have hereunto set my Hand and caused the Seal of said Department to be affixed at Harrisburg, this Nineteenth day of October 1906

*Laac R. Brown*  
Secretary of Internal Affairs.